

The Rocky Road to Dublin

Rehearsal Resource Page



Arranger: Earlene Rentz
Text: Traditional Irish Folk Song

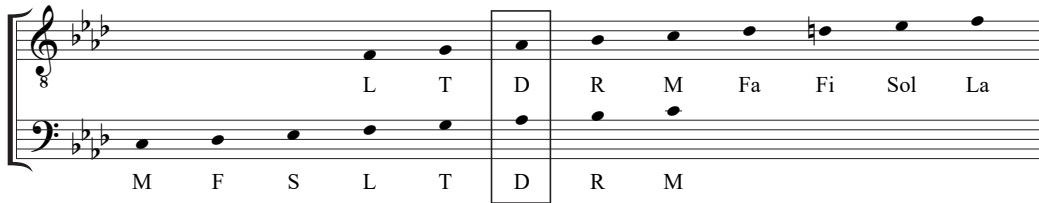
About This Work:

The Rocky Road to Dublin is a well-known Irish folk song that dates back to the 19th century. The song tells the humorous and adventurous story of a young man's journey from his hometown in Tuam, County Galway, to Liverpool, England, in search of opportunity. Set in a fast-paced $\frac{9}{8}$ jig rhythm, the song showcases the wit, resilience, and lyrical storytelling characteristic of Irish folk music. Its energetic tempo and tongue-twisting lyrics reflect both the challenges of emigration and the spirit of Irish identity. Over time, *The Rocky Road to Dublin* has become a staple of traditional Irish music, performed by countless artists and celebrated for its vibrant narrative and musical complexity.



Ranges:



Solfège:



Vocabulary:

<i>mf</i>	<i>mezzo forte</i>	medium loud
	<i>crescendo</i>	to gradually get louder
<i>f</i>	<i>forte</i>	loud
<i>></i>	<i>accent</i>	to emphasize or attack a particular note
<i>mp</i>	<i>mezzo piano</i>	medium soft
	<i>decrescendo</i>	to gradually get softer
<i>sub. p</i>	<i>subito piano</i>	suddenly soft

Vocal Warm-Up: (Exercises created by the arranger, Earlene Rentz)

Practice clapping or tapping the following rhythms as you prepare to sing *The Rocky Road to Dublin*.

1 Tenor $\text{♩} = 100$ (mm. 5-6)

(Sing on Solfège or neutral syllable)

2

(mm. 5-6)

Musical notation for system 2, measures 5-6. The system consists of two staves: a treble clef staff and a bass clef staff. The key signature is three flats (B-flat, E-flat, A-flat). The treble staff contains a melodic line with eighth and quarter notes. The bass staff contains a bass line with eighth and quarter notes.

3

(mm. 5-9)

Musical notation for system 3, measures 5-9. The system consists of two staves: a treble clef staff and a bass clef staff. The key signature is three flats. The treble staff contains a melodic line with eighth and quarter notes, including a whole rest in measure 8. The bass staff contains a bass line with eighth and quarter notes, including a whole rest in measure 8.

Musical notation for system 4, measures 10-13. The system consists of two staves: a treble clef staff and a bass clef staff. The key signature is three flats. The treble staff contains a melodic line with eighth and quarter notes, including whole rests in measures 10 and 11. The bass staff contains a bass line with eighth and quarter notes.

4

(mm. 14-17)

Musical notation for system 4, measures 14-17. The system consists of two staves: a treble clef staff and a bass clef staff. The key signature is three flats. The treble staff contains a melodic line with eighth and quarter notes, including a whole rest in measure 17. The bass staff contains a bass line with eighth and quarter notes, including a whole rest in measure 17.

5

(mm. 14-22)

Musical notation for system 5, measures 14-22. The system consists of two staves: a treble clef staff and a bass clef staff. The key signature is three flats. The treble staff contains a melodic line with eighth and quarter notes, including a whole rest in measure 20. The bass staff contains a bass line with eighth and quarter notes, including a whole rest in measure 20.

6 (mm. 31-38)

Evaluation:

Demonstrate how well you've learned the skills and concepts featured in *The Rocky Road to Dublin* by answering the following questions:

- How does the $\frac{9}{8}$ jig rhythm contribute to the energy and storytelling of the piece?
- What vocal techniques are important for clearly performing fast-paced lyrics?
- How can dynamics and articulation be used to highlight the humor and drama in the song?

Rehearsal Resource Page by Victor C. Johnson
SING! Choral Editor

Explore teacher and student resources for this work and other
SING! titles at www.choristersguild.org/sing

Copyright © 2025 Choristers Guild. All rights reserved. Printed in U.S.A.

The original purchaser is granted permission to duplicate these resource pages. This is a non-transferable license.